

# RIVERBED **WHITEWATER** CLOUD STORAGE APPLIANCE FAMILY

## **SEAMLESSLY INTEGRATE CLOUD STORAGE INTO YOUR INFRASTRUCTURE AND APPLICATIONS**

With Whitewater® cloud storage appliances you'll achieve fast, safe storage of large and critical datasets in the cloud.



## LOW-COST CLOUD STORAGE WITH IMMEDIATE DATA ACCESS: BEST OF BOTH WORLDS

Whitewater leverages the scalability, data durability and pay-for-use pricing of cloud storage with immediate access to your data sitting locally or at another location.

With Whitewater you get inexpensive cloud storage without transmission delays, which allows the cloud to become a new low-cost storage tier that streamlines operations for your archival and data protection systems while delivering a payback measured in months, not years.

## CREATE A NEW STORAGE TIER THAT DELIVERS A FASTER ROI

Combining Whitewater appliances with your existing data protection and archiving applications and cloud storage will enable your organization to:

- Reduce storage and data protection costs by up to 80%
- Achieve instant data recovery while reducing risk
- Seamlessly integrate with leading backup and archiving applications
- Eliminate the management burden of tape based systems
- Slow storage growth by archiving data to the cloud

**“For companies such as ours that deal in high volumes of data, the promise of the Whitewater technology is astounding.”**

*Gensler*



ELIMINATE TAPE, IMPROVE DISASTER-RECOVERY, AND REDUCE COSTS WITH WHITEWATER CLOUD STORAGE APPLIANCES.

## WHITewater CLOUD STORAGE BENEFITS

From reducing your backup and archiving costs to eliminating security concerns, the benefits of Whitewater appliances will enable you to meet your organization's data storage and recovery needs regardless of its size.

**Enterprise scale:** Whitewater appliances can store up to 2.8PB of logical data locally and up to 14.4PB in the cloud. Advanced processors and 10Gbit networking deliver top performance and fast transmission. Available as physical or virtual appliances, Whitewater scales to meet the needs of small offices to large enterprises.

**Immediate recovery:** Built in network efficient replication provides immediate access to data at a second location. Pin important data within the appliance cache to guarantee local access. Leverage, free, read only virtual appliances to deliver fast data recovery at any location with Internet access.

**Reduce data protection costs by up to 80%:** Using advanced storage technologies and pay-for-use cloud storage services, Whitewater appliances reduce the cost of backup and archiving by up to 80%.

**Reduce storage requirements 10 to 30x:** Shrink cloud storage requirements by up to 30 times, thanks to variable segment length, in-line deduplication, and compression technologies that reduce cloud storage costs and speed data transmission.

**Data security:** Strong encryption of data on-site, in transit, and at rest within the cloud means your data remains secure. Encryption

---

**Not only does Riverbed Whitewater save us time, but it's also a considerable cost savings — about 60 percent — from our previous backup model."**

*Psomas*

---

keys remain safe under administrator control in your data center.

**Eliminate the burden of tape-based data protection:** Whitewater appliances eliminate tape, tape management, and vaulting, freeing your administrators from mundane tasks and allowing them to focus on higher-value IT projects.

**Support for Amazon Glacier:** Easily integrate this extremely low cost storage service to store seldom accessed backup and archive data. Whitewater can even throttle restore requests to minimize charges.

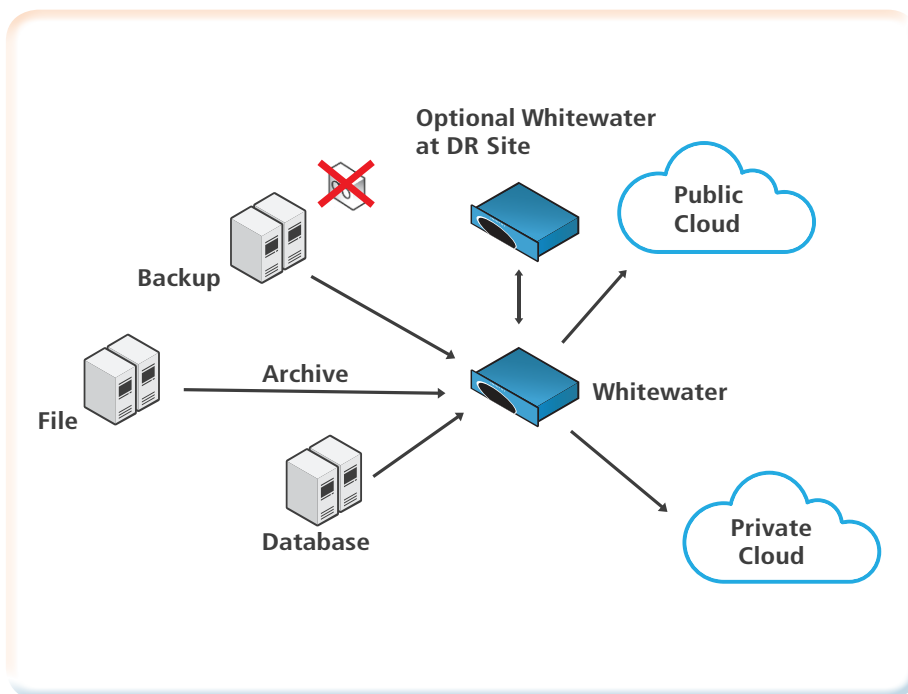
**Symantec Enterprise Vault support:** Symantec Enterprise Vault users can now leverage the durability, low cost, and pay-for-use public cloud as a secure email storage vault eliminating the need to build, scale, and protect dedicated storage.

**Manage efficiently:** Featuring an enterprise user dashboard, Windows Active Directory support, remote management capabilities for multiple appliances and proactive problem reporting, Whitewater easily allows centralized management of remote devices to provide set-and-forget, lights-out backup at remote locations.

**Be confident with industry-recognized, enterprise class support:** Riverbed achieved global certification for the 2nd consecutive year, under the J.D. Power and Associates Certified Technology Service and Support Program recognizing Riverbed for delivering "An Outstanding Customer Service Experience" and also TSIA Excellence in Service Operations. Riverbed is one of a select few companies to receive this distinction for global certification under both the J.D. Power and Associates CTSS and the TSIA Excellence in Service Operations program in the same year.

## WHITEWATER CLOUD STORAGE APPLIANCES INTEGRATE LEADING CLOUD STORAGE PROVIDERS INTO YOUR EXISTING APPLICATIONS

Acting as a broker, Whitewater appliances provide simultaneous access to your public or private cloud of choice for all supported applications.



Typical Deployment

PUBLIC CLOUD	PRIVATE CLOUD	BACK UP
	ARCHIVING	
	DATABASE	

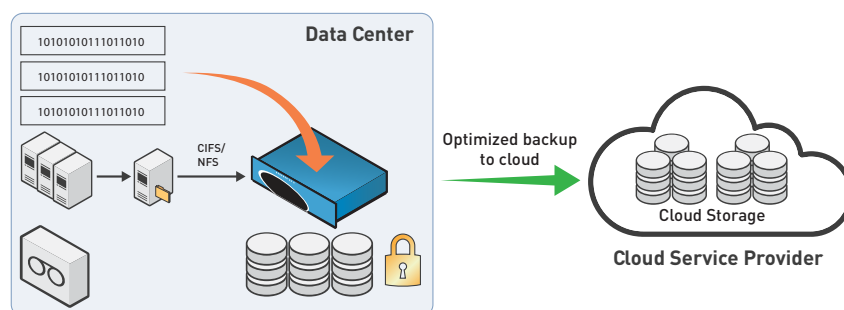
Supported Clouds and Applications

## HOW WHITEWATER CLOUD STORAGE WORKS

Whitewater appliances enable you to modernize your organization's data protection, streamline operations, and reduce costs. Here's how:

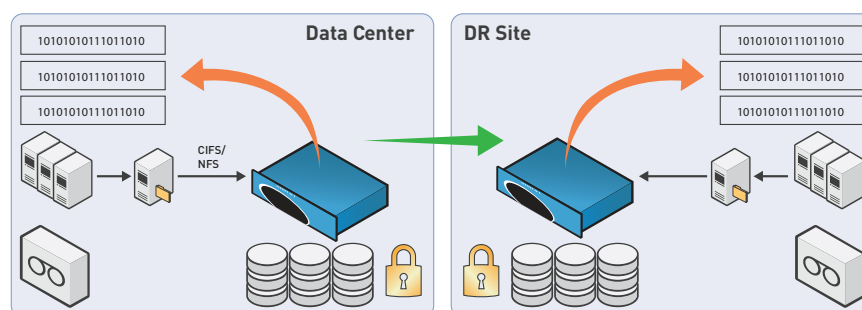
### Store your data in the cloud

A backup or archiving application sends data to the Whitewater appliance, where it is deduplicated, compressed, and encrypted. The data is stored in the local cache and also replicated to cloud storage, and also can be transmitted to a second Whitewater appliance.



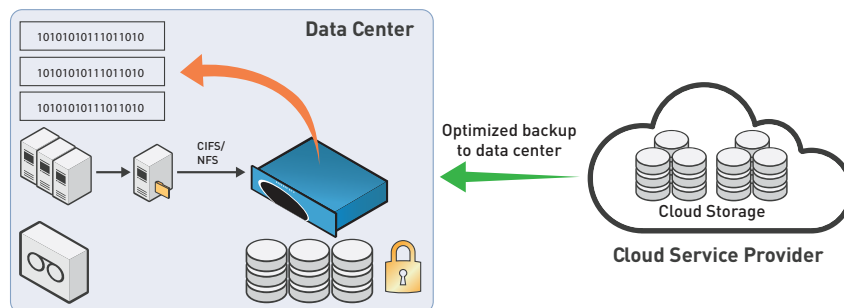
### Fast, local restoration of your data

The Whitewater appliance reads data from its local cache, rehydrates it, and then provides it to the backup or archiving app without any cloud interaction. With use of built-in replication, data is immediately available from the secondary Whitewater appliance with no cloud interaction or transmission delays.



### Restore your data from the cloud

For old or seldom-accessed data, the Whitewater appliance first reads the local cache and pulls missing segments from the cloud. It then integrates the data, rehydrates it, and provides it to the backup application. Because much of the data requested exists in the cache through deduplication, recovery speed is increased.



## WHITEWATER APPLIANCE MODEL

Whitewater cloud storage products are available as physical and virtual appliances to meet the needs of all sizes of organizations. To learn more about Riverbed Whitewater cloud storage appliances, visit [riverbed.com/whitewater](http://riverbed.com/whitewater).

### Physical models

Whitewater Models	510	710	730	2030	3030
<b>Appliance Cache Capacity</b>	2TB	4TB	8TB	16-48TB	32-96TB
<b>Logical Data in Cache at 30x deduplication, TB</b>	60	120	240	480-1440	960-2880
<b>Logical Data in Cloud at 30x deduplication, TB</b>	300	600	1200	7200	14400
<b>Network</b>	6xGbe			2x1Gbe, 4x1Gbe or 2x10Gbe	
<b>Raid Protection Level</b>	RAID-6				
<b>Maximum Ingest Rate GB/Hr</b>	400	600	1500	2000	2500
<b>Average Deduplication</b>	10 to 30x				

### Virtual models

Whitewater Models	v110	v210	v410
<b>Appliance Cache Capacity</b>	Up to 2TB	Up to 4TB	Up to 8TB
<b>Logical Data in Cache at 30x deduplication, TB</b>	60	120	240
<b>Logical Data in Cloud at 30x deduplication, TB</b>	240	600	1200
<b>Network</b>	2x1Gbe		
<b>Raid Protection Level</b>	Customer Provisioned		
<b>Maximum Ingest Rate GB/Hr</b>	250 GB/hr		
<b>Average Deduplication</b>	10 to 30x		

